

# THE MOOSPAPER

Brunswick district community newsletter - Est. 2001

**GOLD COIN DONATION - THANK YOU**

## OTHER STORIES INSIDE THIS ISSUE:

### Page 2

Community Update

### Page 3

Maggie's Musings

### Page 4

Going Up - Gardening  
Clubs new edition

### Page 5

National Volunteer  
Week

### Page 6

The show will go on

### Page 10

Walking Group back  
on the move



## NEW ONLINE HUB FOR BRUNSWICK

Over the past few months, the team at the Brunswick Community Resource Centre (BJCRC) have been working on an exciting new project. An online hub for local businesses, community groups, sporting groups and services. With the way COVID-19 has affected us all, the centre saw an increased need for access to online information. To make it easier for our community we decided to create a website - [brunswickwa.com](http://brunswickwa.com) - that hosts a wealth of information about everything Brunswick.

The website is designed to make it easy to find local information, engaging and connecting community members with a wide variety of local groups and businesses. We recognise that having an online presence is becoming more and more important for businesses/services and that maintaining your own website can be costly and time-consuming.

As an introductory offer and part of the BJCRC's contribution to the recovery from COVID-19, this will be a FREE service for the remainder of 2020. Thereafter a small annual fee will be charged to cover the costs of maintaining the website and any updates to each business/organisations webpage or advertisement.

Head to **[brunswickwa.com](http://brunswickwa.com)** to explore the website for yourself and see if it can help you. If you'd like to be a part of this exciting new online hub contact the Brunswick Community Resource Centre on 9726 1542 or email [brunswickjunctioncrc@gmail.com](mailto:brunswickjunctioncrc@gmail.com)



**BRUNSWICK JUNCTION COMMUNITY RESOURCE CENTRE**

1 RIDLEY STREET, BRUNSWICK, WA.6224

PH: 9726 1452 - EM: [brunswickjunctioncrc@gmail.com](mailto:brunswickjunctioncrc@gmail.com)

# COMMUNITY UPDATE!



## BRUNSWICK SHOW UPDATE

The Brunswick Agricultural Society have, this week confirmed that despite the current COVID-19 concerns, preparations for this year's show on the 24th October will continue as planned. Brunswick Agricultural Show president Mark Talbot said "We have to have something to look forward to and for many people near Brunswick, this show is a big part of the calendar. We are working towards hosting the show and we will continue to go down that path until we are told we can't." The theme for the 2020 Brunswick Show will be "Celebrating Rural Transport".

## TENNIS CLUB SUCCESS

The Brunswick tennis club has a lot to celebrate with Club President Julianne Hill being awarded the Tennis West state award for volunteer of the year. Julianne spoke with GWN7 saying that it is the whole community that makes something like this work it's not just one person. Over time, the club has grown and now has over 70 junior players from across 10 different schools. Ali-Faye Gidgup has been recognised as a talented player, winning many competitions at just 9 years old. Robyn Clarke MLA has donated \$500 to help the young player achieve her tennis dreams. Be sure to like the Brunswick Tennis Club's Facebook page to keep up to date.



*Julianne Hill with her Awards*

## OP SHOP BACK UP AND RUNNING

When Covid-19 hit, the Brunswick Community Resource Centre had to close their Op Shop doors. This, unfortunately, meant the Op Shop could not accept donations or open their doors for community members to browse. Volunteers Sarah, Irene, Merilee and John spent 5 days cleaning out the Op shop and re-stocking it ready for the reopening. All the stock has been rotated and tidied. With restrictions beginning to ease in Western Australia, the CRC has the go-ahead to re open the Op Shop. Donations will once again be accepted and the Op Shop doors will be open from 9:00 am to 2:30 pm Monday to Friday.



*Sarah & Irene in front of the Op Shop*

## Congratulations

Jenny and Louie Zampogna of Brunswick on their 50th wedding anniversary

Angie and Ross Princi of Brunswick on their 45th wedding anniversary

Rob George and his fiancée Jan Bowan on their engagement

## Thanks

A BIG thank you to **Leesa Sutherland** for her beautiful photos which were featured in our ANZAC Day article.

**KUZA COFFEE** for their free coffee donations on Volunteer Day

Our **Moospaper editors and contributors** for their efforts each month

# MAGGIE'S MUSINGS

Margret Carbone



Welcome to Winter! The cooler weather is here, so we hope you will enjoy reading this June issue of The Moospaper, maybe with a nice hot cuppa! As local residents keep on trying to do the right thing in the continuing Coronavirus / COVID-19 pandemic, the South-West has reported no cases for some time and there are now only a few cases left in WA, thanks to the public's following of government restrictions. Some are still following the "Stay At Home" campaign recommendations, while others have ventured out in the wake of the easing of restrictions in WA from 18 May. This includes the removal of the border closure between the South-West region and the Peel/Perth regions, allowing for unrestricted travel. Schools and some small businesses have re-opened, adhering to distancing and hygiene guidelines. Brunswick has been fortunate that local essential services such as pharmacy, hardware and rural services, supermarket, post office and fuel were able to remain open, while our local hairdresser resumed services after only a short break. Brunswick Tavern has re-opened for a maximum of 20 people at a time, taking dinner bookings as alcohol is served only with meals in accordance with government advice. Harvey-Brunswick-Leschenault Football Club players have re-commenced regular training on the oval, however, both the football clubrooms and Brunswick Bowling Club remain closed as the committees await further directives from South-West Football League and Bowls WA.

Amongst all this, as everyone tries to do their best in the current circumstances, plans for some Brunswick events such as the Brunswick Show in October are going ahead, in the hope that the situation will have improved enough for restrictions to be lifted. Our community has rallied around to support local businesses and keep them afloat during these tough times, grateful to have a home delivery service now available from Brunswick IGA and appreciative of the extra hygiene measures now being applied at places like the hairdresser and fuel station. The Post Office has had protective glass screens installed but still provides friendly service with a smile!

In other local news, the Shire of Harvey's three-bin system continues to be embraced by the Brunswick community after commencing in August 2019. Ten months into the new waste management scheme, locals have become accustomed to fortnightly pick-ups and the correct separating of waste. The FOGO Bin, "Food Organics Garden Organics", is emptied weekly and accepts compostable items such as cardboard, food scraps, bones and eggshells, tissues, paper towels, popsicle sticks and garden clippings. A free supply of 200 compostable bags, which fit nicely into the 7-litre kitchen caddy, will be provided to households around rates time this year, expected to be in August/September. Anyone wishing to purchase bags before then can do so at Shire of Harvey offices in Harvey and Australind, \$5 for a roll of 20. Bags are also sold at Bunnings Hardware Stores and MJ Goods in Treendale. Take care everyone! Don't you just LOVE Brunswick?!

*BreastScreen WA*

**ALL THE LADIES:** The state's health department is encouraging local ladies to take advantage of the cancer screening facility provided by Breast Screen WA, which will be located at Harvey Recreational & Cultural Centre (near Harvey football oval) from 22nd June until 16th July. The mammogram service is available to all ladies who are eligible for Medicare and aged 40 years or over, and the service is free for ladies over 50 years old. Appointments are essential and can be made by ringing 13 20 50, or online via the Breast Screen WA website.



## GOING UP

TINA WALLIS

Funding for the new shade house/polytunnel was secured earlier in the year, about the same time as COVID-19 was starting to make itself known - a strange benchmark to use, but sure it is now firmly etched



in historical records for all time. Unaware of the impact that this deadly virus was going to (and continues) to wreak, the order for the new addition to the community garden was placed with a firm in the Shire of Kalamunda, Walliston - what a great name for a town!

First stage of the plan was to borrow a trailer to collect the consignment and in the meantime prepare the site in the community garden. It was only a few days after we received notice of the order being ready, when the restrictions of travel intrastate were announced, thereby presenting an early hurdle to overcome. Unfortunately, we didn't have sufficient funds to organise paid transport, but we did discover a wealth of a different nature in the generosity of our community members. A quick shout out on Facebook saw a flood of responses to help us out, with Harvey Courier coming to the ultimate rescue. Without hesitation, they agreed and arranged to transport the load within a matter of days - I was quite overwhelmed by such generosity. Definitely deserving of mention too was the support provided by Brunswick Bakery's co-manager Nick, who came willingly along with his fork-lift to help offload the consignment. This demonstrates the true community spirit we are so fortunate to have in our community and so worthy of celebrating! Thank you to Catherine and the drivers from Harvey Courier who are just the friendliest of people - service on a par to none! Also thank you to the generous maker and creator who donated the cake! Next is the build and so the story continues....



Pictured above Tina Wallis and Catherine from Harvey Courier. Below Nick from Brunswick Bakery. The poly tunnel is proudly supported by the Department of Communities.



Government of Western Australia  
Department of Communities

## NOTICE BOARD

Call the CRC for more details as some groups are not operating as normal due to Covid-19.

### OVER 55'S EXERCISE GROUP

Come and join in for free  
Every Monday morning  
8:30-9:30 at BWK Town Hall

### Dance MOO...d

Brunswick performing group  
Every Monday 5:30pm at the CRC

### CRAFTY CHICKS

Second & fourth Wednesday of the month  
10am @ CRC

### BOOK CLUB

The next bookclub is March 16th  
7:00pm @ CRC

### MEN'S SHED GATHERING

Every Thursday 9:00am at the guide hall  
(BWK Oval)

### WALKING GROUP

Every Thursday 9:00am at the CRC

### BINGO

1st & 3rd Tuesday of the Month  
1:00pm at the Anglican Church Hall

### YOUTH GROUP (primary school)

Every Friday afternoon (during school term)  
3:00-5:00pm at the CRC

### LATE NIGHTS (high school)

Every second Friday (during school term)  
6:00-10:00pm at the CRC

### PLAYGROUP by SWAMS

Every Tuesday 10am-12pm  
at the CRC

### COMMUNITY GARDEN

3rd Saturday of the Month 9:30am  
at the CRC

### OP-SHOP @ CRC

Open 9am to 2:30pm Mon-Fri  
Donations Accepted



# National Volunteer Week

On Wednesday, 20th May, the Brunswick Community Resource Centre hosted a socially distant morning tea to celebrate volunteers in the Brunswick Community. National Volunteer Week is the annual celebration to acknowledge the generous contributions of our nation's volunteers and is held from Monday 18th May through to Sunday the 24th May 2020.

Brunswick locals and community centre volunteers enjoyed finally being able to gather together and enjoy morning tea. Thanks to Kuza Coffee for their kind donation of free coffee for the volunteers.



"It is important to say thanks to our fellow volunteers for the enormous contribution they make each and every day, and recognise volunteers contributions during what has been a challenging year for all Australians." - The National Volunteer Week Website

National Volunteer Week WA encouraged all groups to draw a smiley face on their hand to say thank you to our volunteers. During these uncertain times, now, more than ever, is the time to recognise volunteers and spread the message that volunteers around Australia really are changing communities and changing lives.



*Pictured left to right: Juldy from Kuza Coffee. Volunteers enjoying morning tea, Jo Dalton showing off her smiley face to thank volunteers.*



# THE SHOW WILL GO ON

MARGRET CARBONE

The 2020 Brunswick Show will have new and improved facilities around the grounds and pavilions, following a \$124,000 grant approval from the Federal Government.

Brunswick Agricultural Society (BAS) president Mark Talbot and his wife Angela, both long-time show volunteers and BAS members, welcomed Brunswick-raised Forrest MHR Nola Marino to Brunswick in May, as the announcement came that our local Show was one of the 122 successful applicants in the distribution of twenty million dollars allocated for regional shows.

Plans for the funds include improved toilet amenities, shaded seating, installation of watering points for livestock, shelter upgrades to sheep yards and new portable yards for exotic breeds. Mr Talbot said that Brunswick Agricultural Society has the only public-access cattle yard in the Shire of Harvey, and the Society are pleased to be able to upgrade this facility for the community, bringing the Society to the forefront in regards to biosecurity standards. He also commented that the funding has come at an opportune time, as a number of necessary projects already earmarked by BAS can go ahead. With the Coronavirus pandemic affecting many local organisations and local businesses BAS is hoping to soon begin the upgrades. The BAS will where possible use South west contractors and services. The projects will be of benefit to all showground users, such as Harvey-Brunswick-Leschenault Football Club which also seeks to support local and recently awarded the building contract for new ladies' changerooms to Tradesman Homes of Bunbury, whose owners have connections to Brunswick. Occasional showgrounds users such as caravan clubs and fundraising groups will also reap the advantages, and the area will be better equipped for emergency situations such as the 2016 bushfires, when the showgrounds and nearby football clubrooms were used as a base for helicopter landings and rest areas for fire crews.

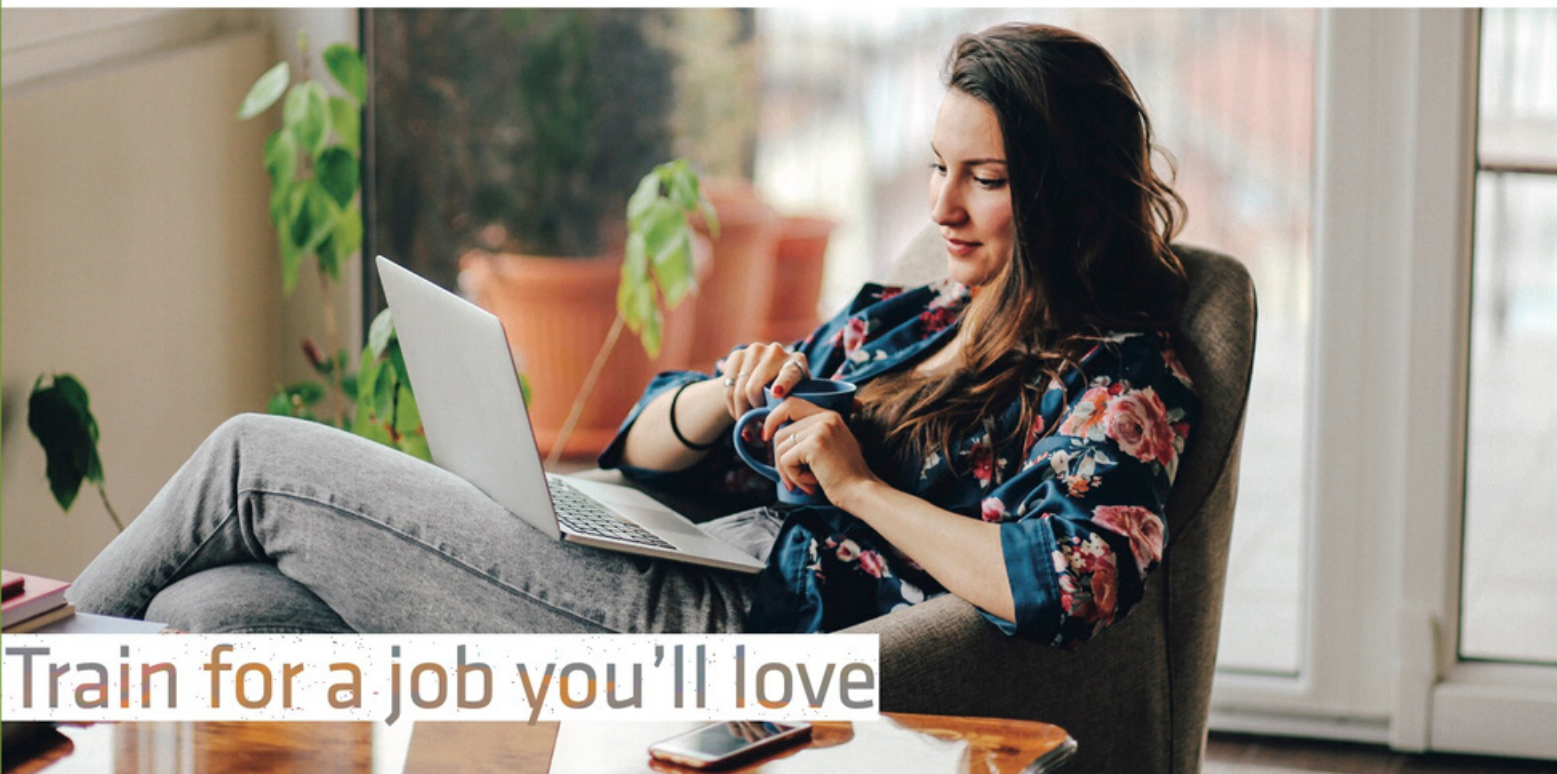


Mrs Marino said she was excited to see the role of agricultural shows and volunteers given well-deserved recognition in the allocation of the grants. She believes that Brunswick Show is a celebration of the community, and commented that it is pleasing to see organisations stepping up to keep regional communities going. Mrs Marino's parents, Sam and Alma Catalano, were Brunswick Show volunteers and owners of a trucking and transport business, and Mrs Marino welcomed this year's Show theme "Celebrating Rural Transport". Mr Talbot remarked on the theme being timely in consideration of the vital role played by transport operators during the pandemic.

A very big thank you was extended to the Society's senior vice-president Julianne Hill, who took the time to research, prepare and submit the application. Mrs Hill advised that the coordinators of sideshow alley, WA Showmen's Association, were working towards getting their own funding so they could also contribute to upgraded facilities.

Despite the current pandemic, BAS volunteers are still actively preparing for the 89th Brunswick Show in the hope of staging the event on 24th October. Vice-president David Power said that projects funded by the grant will go ahead as planned, so that even if the 2020 Show is unable to be held, BAS will have the new infrastructure in place and be fully prepared for next year's Show.

*Pictured Above: David Power, Mark Talbot, Nola Marino MHR and Julianne Hill admire the Talbot family's vintage truck with Marley the dog*



Train for a job you'll love

# Apply now for Semester 2


Find your course on our website  
Apply online or phone for assistance


## Courses start in July

Ask us about courses with **half-price fees** under  
the *Lower fees, local skills* program

Visit [jobsandskills.wa.gov.au/lowerfees](https://jobsandskills.wa.gov.au/lowerfees)

 Collie Campus  
43 Wittenoom Street

 6371 3900  
Freecall 1800 621 445

 [collie@srtafe.wa.edu.au](mailto:collie@srtafe.wa.edu.au)  
Find us on Facebook

RTO Code 52790

[southregionaltafe.wa.edu.au](https://southregionaltafe.wa.edu.au)



## THE SURPRISING BENEFITS YOUR KIDS GET FROM PLAYING BOARD GAMES

If you bring out board games on cozy Friday nights or over long holiday weekends, know that your kids get big benefits out of this special family time. In addition to teaching them about teamwork, patience, and how to win and lose gracefully, board games can benefit kids' brain and language.

### 1. Opportunities for early learning.

Even simple games help young players identify colours, count spaces and develop hand-eye coordination and dexterity in moving pieces around the board. Plus, learning to wait for your turn and follow rules are important lessons that serve kids far beyond the living room floor.

### 2. They get older kids' brains buzzing too.

Board games are an easy way to encourage healthy brain development in older kids and teens. Strategy games are useful in helping the frontal lobes of the brain develop. Those frontal lobes are responsible for executive function skills, which include planning, organizing and making good decisions.



### 3. They boost their language skills

Board games can be a sneaky way of helping school-aged kids work on skills they're struggling with. Games in which players have to remember several pieces of information at once (who did what, and where) might help a child who's having trouble with reading comprehension – all while still having fun.

### 4. They sharpen your child's focus.

Board games, when played without interruptions, can help lengthen a child's attention span, "If you family sits down for a game of Chinese checkers, be sure to complete a full game without everyone checking their phones, asking Alexa to play a song, or turning on the tv for the latest football scores. Finishing a board game without interruptions will help lengthen the declining attention span of kids in a world filled with digital distractions."

### 5. They teach the value of teamwork

Board games often offer kids meta-messages about life: Your luck can change in an instant, for better or for worse. But in addition to teaching them that nothing is guaranteed, board games are a good way to encourage kids of different ages to team up and work together – something they'll need to do throughout life.

### 6. Board games are an alternative to time out

The next time you find yourself going through a rough patch with one of your kids, consider playing a board game together instead of sending them to their room. They can also be used to increase turn and practising patience during a game – even when things don't go their way – can help little ones practising more respectful responses than stomping off and slamming their bedroom door shut.

## BIKELINC REGISTRY LAUNCHES

Crime Stoppers WA have launched a service to help police officers identify stolen bicycles and reunite them with their rightful owners. The Bikelinc service includes a real-time search feature that easily links bicycles with their owners. The service has been designed to connect a community of bike-minded people and help reduce bike theft. More than 9000 bicycles are stolen in WA each year and the problem has been growing in the community over the past decade. Cycling enthusiasts can also check if bikes for sale are safe or have been reported as lost or stolen. Head to [Bikelinc.com](http://Bikelinc.com) to learn more.





**JOE O'KEEFFE**

QUALIFIED TRADESMAN WITH 20 YEARS EXPERIENCE

**ALL SORTS  
CARPENTRY AND MAINTENANCE**

ALL SORTS ARE YOUR LOCAL, SMALL JOB  
SPECIALISTS - ABLE TO ASSIST YOU WITH  
ALLSORTS OF HOME IMPROVMENTS .

HANDRAILS | SHELVES | DECKS | PATIOS |  
WELDING | GENERAL REPAIRS AND MORE

**Ph: 0413 819 978**  
**EM: allsortscarpentry@gmail.com**



No call out fee for work on  
Brunswick or Roelands premises

ABN 44524126550



APPLY NOW TO ENROL YOUR CHILD  
IN KINDERGARTEN FOR 2021

**BRUNSWICK JUNCTION  
PRIMARY SCHOOL**

Opportunities, Challenges, Growth

If your child was born between 1 July 2016  
and 30 June 2017 you can apply to enrol them  
in Kindy for 2021.

Please see our friendly staff at 6 Vincent Street,  
Brunswick or call 97889100 for more information.

**EARTH  
MOVING  
CONTRACTOR**

**A.H. GEORGE & SONS**  
BRUNSWICK A.B.N. 88 831 643 676

- Sand, Gravel, Limestone, Loam, Metal Dust and Rock
- Track Loaders 963, 973
- Wheel Loader
- Skid Steer
- Float Tri-axle
- Trucks
- Grader
- Back Hoe
- Excavator 30 Ton



**SPECIALISING IN SMALL RURAL HOLDINGS,  
DAM AND ROAD CONSTRUCTION AND  
CLEARING, STUMP REMOVAL AND EROSION  
CONTROL.**

**Contact Rob George: Mobile: 0417 173 553,**

**Ph. (08) 9726 1132, Fax: (08) 9726 1560 or:**

**Eric George: Mobile: 0439 957 057**

**FUN FACTS**

Why is shifting responsibility to someone else called 'passing the buck'?

BECAUSE: In card games, it was once customary to pass an item, called a buck, from player to player to indicate whose turn it was to deal. If a player did not wish to assume the responsibility of dealing, he would 'pass the buck' to the next player.

Why do people clink their glasses before drinking a toast?

BECAUSE: In earlier times it used to be common for someone to try to kill an enemy by offering him a poisoned drink. To prove to a guest that a drink was safe, it became customary for a guest to pour a small amount of his drink into the glass of the host. Both men would drink it simultaneously. When a guest trusted his host, he would only touch or clink the host's glass with his own.

Why are people in the public eye said to be 'in the limelight'?

BECAUSE: Invented in 1825, limelight was used in lighthouses and theatres by burning a cylinder of lime which produced a brilliant light. In the theatre, a performer 'in the limelight' was the centre of attention.

# WALKING GROUP BACK ON THE MOVE

Over the past few months, we have seen many social groups in Brunswick cease, due to the current Covid-19 pandemic restrictions, but the Brunswick Walking Group is excited to be back on the move. The walking group began in late 2003 after Jo Moore and David Marshall received a Be Active grant to start the Brunswick Walking Group.



Over the past 17 years, the group has evolved into a great place where, you not only keep physically active, but socially connected. Group leader Adrie Noordermeer joked that over the years the walks have become shorter and the talking has become longer. When speaking with the walking group all the members agree they love the walking, but it's the social gathering afterwards that really draws them in. They credit the walking group for helping keep themselves physical and mentally active.

As years go by, the group have seen many members come and go, mums with babies, people with dogs, seniors of Brunswick, they even had Michael, a Brunswick local, ride his gopher alongside the group to join in. "It doesn't matter what fitness level you are, the walking group has no limits whether you're a fast walker or a slow walker or sit somewhere in between, there are people who are at the same level, so don't let that stop you from coming along" Ida Noordermeer

The walking group have created a brochure featuring Harvey & Brunswick walking circuits. You can pick up a copy of it at the Brunswick Community Resource Centre, Monday to Friday, 9:00 am to 3:00 pm.

The Brunswick Walking Group meets every Thursday at 9:00am at the Brunswick Junction Resource Centre.

**SINGER ALL  
PURPOSE OIL  
100ML  
\$3.99**



**SPEAR AND  
JACKSON  
AXE  
\$35.00**



**REDBACK  
WORK  
BOOTS  
\$120**



Monday-Friday  
7am-5.30pm  
Saturday  
7am-1pm

97 261 557

Wayne: 0419 949 659  
Ray: 0488 932 279

It is not how much  
**we have,**  
but how much  
**we enjoy**  
that makes  
*happiness*

- Charles Spurgeon -



# Solve the Visual Puzzles

Can you solve these visual word puzzles? Let your mind explore and you are sure to find the answers. Good Luck!

1. <b>FACE</b>	2. <b>EGG EGG</b> <b>HAM</b>
3. <b>BUR</b>	4. THUMBS THUMBS THUMBS THUMBS THUMBS THUMBS...
5. TEEF FEET TEEF	6. FAMILY SHEEP
7. po <b>FISH</b> nd	8. ISSUE ISSUE ISSUE ISSUE ISSUE ISSUE ISSUE ISSUE ISSUE ISSUE
9. TIME a b d e f g h i j k l m n o p q r s t u v w x y z	10. DAYSALLWORK

# Magic Boxes

Fill in grids so that each column, row and diagonal add up to the given sum!

The sum is 15.

2		
	5	3

The sum is 30.

	10	6
12		

# WORD SEARCH

Hen  
Den  
Pen  
Men  
Ten

b	H	e	n	s	t
D	M	g	r	l	E
E	e	t	p	h	n
N	n	w	E	e	c
P	e	n	n	N	F
m	e	N	d	e	n
k	J	y	T	e	n

# SOLUTIONS

8	1	6
3	5	7
4	9	2

The sum is 15.

16	2	12
6	10	14
8	18	4

The sum is 30.

**Hon Colin Holt MLC**  
Member for South West Region

Your representative in the Parliament of Western Australia.

Please contact me if I can assist you, your family or community group.

colin.holt@mp.wa.gov.au  
www.colinholt.com.au  
Freecall: 1800 758 458  
Ph: 08 9724 1181



Authorised by C Holt,  
Unit 2/8 Cassowary Bend,  
Eaton WA 6232

**INTERNATIONALS** for Regional WA

Solutions: 1. Red in the Face 2. Green eggs and ham 3. back rub 4. little pond 8. Tennis shoes 9. Long time no see 10. All in a days work



The Brunswick Community Resource Centre has lifted their restricted access policy. The centre has completed their COVID-19 safety plan and staff members have taken part in the AHA Hospitality & tourism COVID-19 Hygiene Course. Under new government guidelines, at the time of press, the centre has a capacity for 20 people at any one time. Strict hygiene and social distancing practices are still being exercised and will continue.



**Western ALLPEST SERVICES**  
WHEN LOCAL EXPERIENCE MATTERS



#### SERVICING THE ENTIRE SOUTH WEST REGION

Spiders • Ants • Rodents • Cockroaches  
Fleas • Millipedes • Flies • Mosquitoes • Bedbugs

#### SELECT OR TOTAL KILL OF WEEDS

23 Clifford Street, PO Box 4172, Bunbury, WA 6231

**Phone: (08) 9726 2550 (All Hours)**

Email: [saoo@westernallpest.com.au](mailto:saoo@westernallpest.com.au) | [www.westernallpest.com.au](http://www.westernallpest.com.au)

## MOBILE MECHANIC

- TRUCKS
- EARTHMOVING
- OLD CARS
- FARM EQUIP
- MACHINERY
- WELDING

**MICK LAWLER**

**0400 973 200**

**WE DO  
ANYTHING  
ANYWHERE  
ANYTIME**

## Moospaper

Brunswick District Community newsletter  
Produced by the Brunswick Community Resource Centre

#### Contacts:

1 Ridley Street, Brunswick WA 6224  
Ph. 9726 1452 Fax 9726 1511 Email: [moospaper@gmail.com](mailto:moospaper@gmail.com)

Periodicity: 11 issues a year, from February to December.

Policy: Articles included at the editor's discretion and may be edited for clarity and space. Published articles become public domain and may be reproduced at any time.

Advertising rates: Quarter page - \$12, Inserts  
Subscriptions: Delivered by mail - \$45, by email - \$5 a year.

Disclaimer: The editorial team accepts no liability for the accuracy of any of the information, any errors or omissions in this newsletter. The editorial team reserve the right to edit contributions as they see fit. Any views expressed are those of the contributor.